

FLEXIBLE DRAIN PIPE (DATA SHEET)

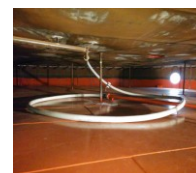
COFLEXIP® DRAIN IS PART OF A FULLY ENGINEERED SYSTEM. IT IS INSTALLED IN ONE CONTINUOUS LENGTH WITHOUT BALLASTING OR OTHER COMPENSATION DEVICES. UNLIKE OTHER SYSTEMS, THERE ARE NO INTERMEDIATE COUPLINGS OR SWIVEL CONNECTIONS.

ITS STRUCTURE CONCERNS OF TWO LAYERS. AN INTERNAL SPIRAL WOUND STAINLESS STEEL CARCASS WHICH FLEXES BUT NOT KINK OR COLLAPSE SO MAINTAINING ITS INTERNAL DIAMETER INTEGRITY. AN OUTER THERMOPLASTIC SHEATH, RILSAN®, IS EXTRUDED OVER IT MAKING THE PIPE COMPLETELY LEAK PROOF AND RESISTANT TO MOST CHEMICALS.



ITS LAY-PATTERN IS REPEATABLE AND CAN BE CUSTOM ENGINEERED THROUGH A FEASIBILITY STUDY WHICH ANALYZES AND AVOID POSSIBLE INTERFERENCES WITH OTHER TANK INTERNAL EQUIPMENT

Technical Specifications						
Nominal diameter	3"		4"		6"	
Internal diameter	3.0 in	7.6 cm	4.0 in	10.2 cm	6.0 in	15.2 cm
Outer diameter	3.9 in	9.8 cm	4.9 in	12.4 cm	6.9 in	17.4 cm
Linear weight empty	4.4 lbs/ft	6.6 kg/m	5.8 lbs/ft	8.6 kg/m	10.2 lbs/ft	15.2 kg/m
Minimum bending radius (storage)	2.1 ft	0.65 m	2.7 ft	0.8 m	3.7 ft	1.1 m
Working pressure	30 psi	2.1 bar	30 psi	2.1 bar	30 psi	2.1 bar
Test pressure	60 psi	4.2 bar	60 psi	4.2 bar	60 psi	4.2 bar
Minimum hydrostatic collapse pressure	190 psi	13 bar	145 psi	10 bar	115 psi	8 bar
Maximum working temperature	Up to 100°C or 212°F, depending on the type of fluid stored.					



Length determination		
	Imperial/US	Metric
3 in	H + 6 ft	H + 1.8 m
4 in	H + 8 ft	H + 2.5 m
6 in	H + 12 ft	H + 3.7 m
8 in	H + 15 ft	H + 4.6 m

H = floating roof tank shell height